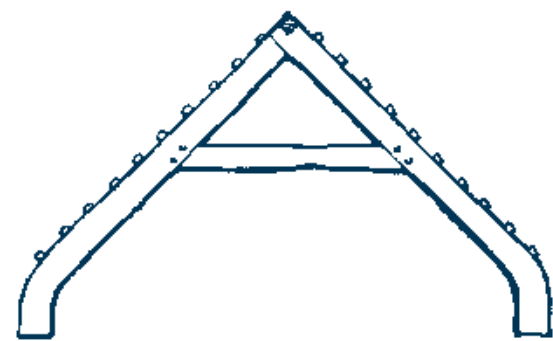


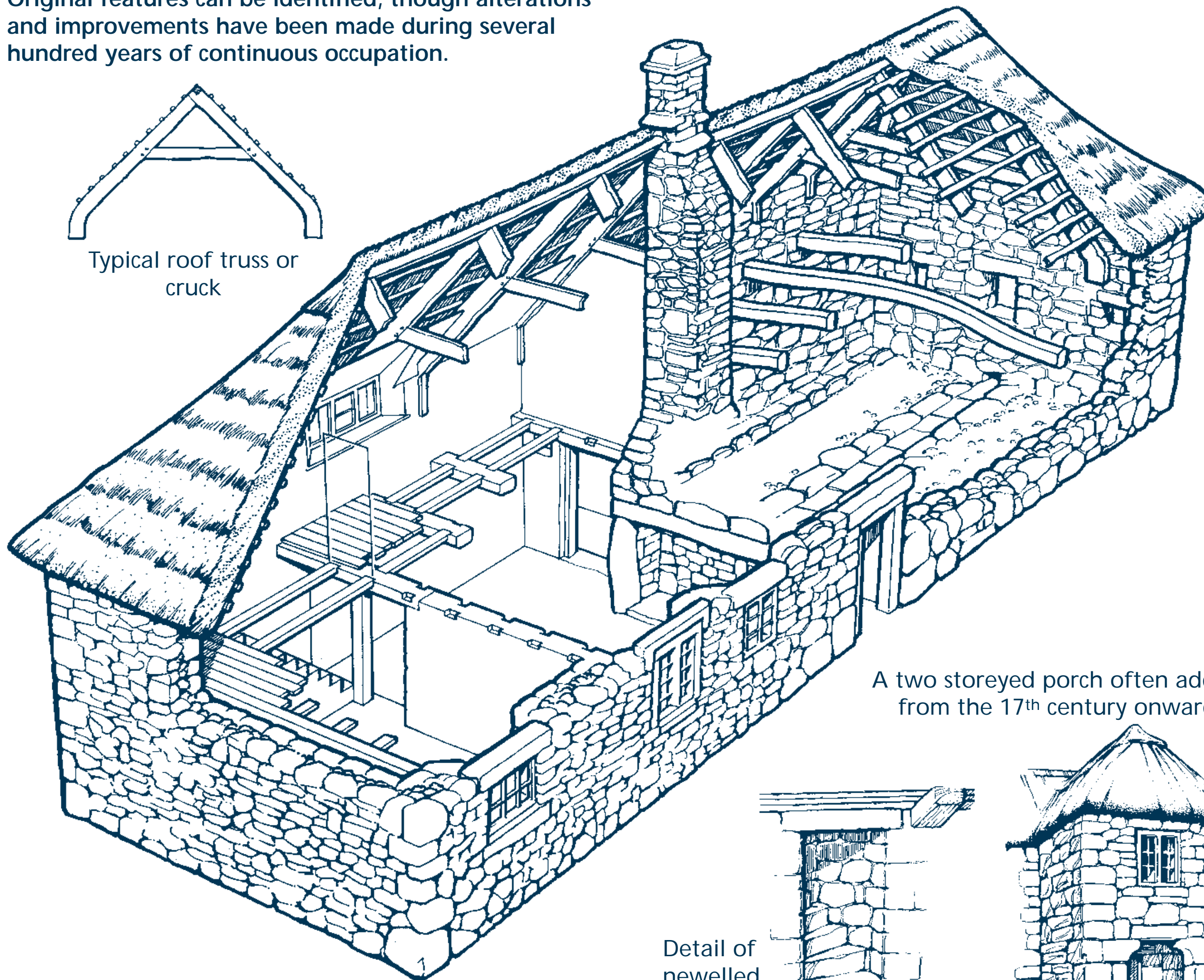
The Dartmoor Longhouse



The granite Dartmoor longhouse is a distinctive type of farm building dating back to the medieval period, probably as early as the 13th century. Many of these longhouses can still be seen, some ruined but others still lived in. Original features can be identified, though alterations and improvements have been made during several hundred years of continuous occupation.

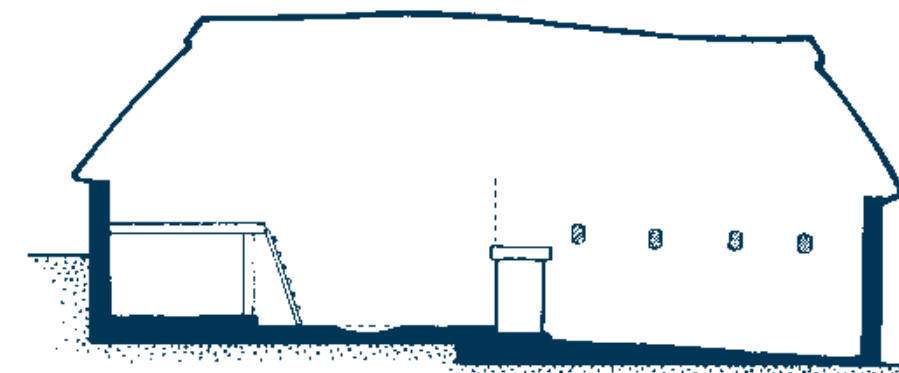
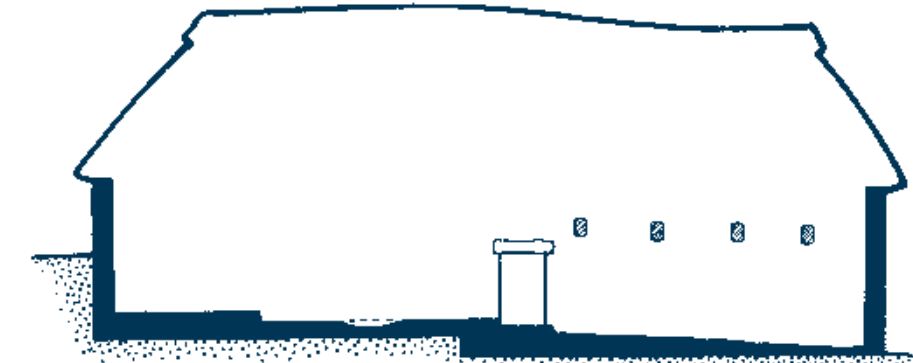
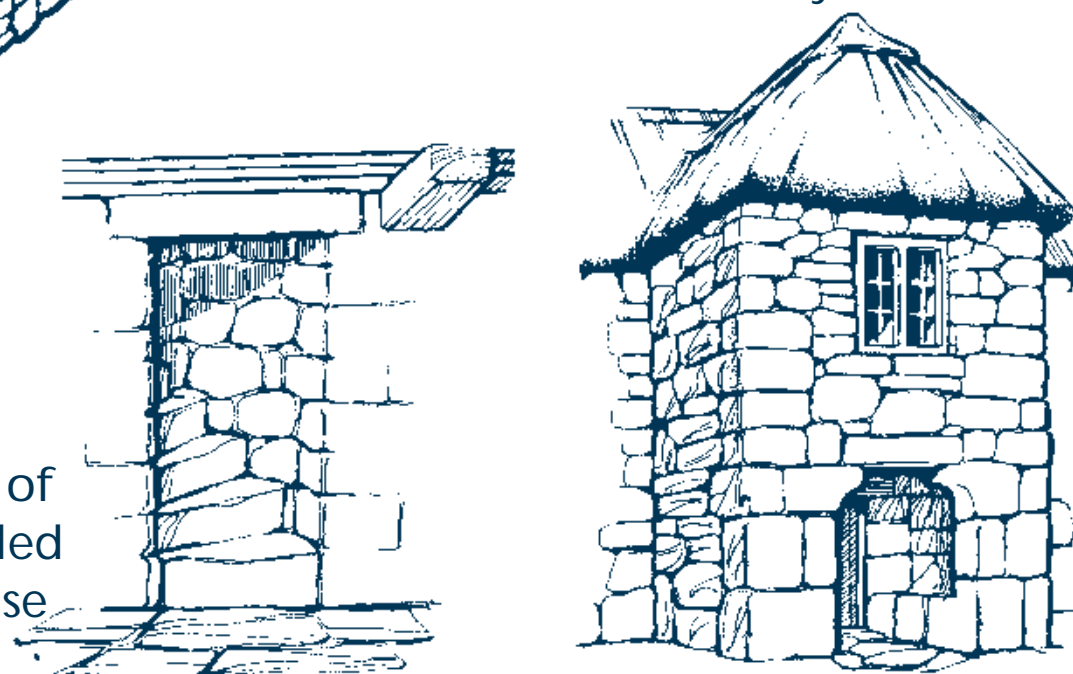


Typical roof truss or cruck



A two storeyed porch often added from the 17th century onward

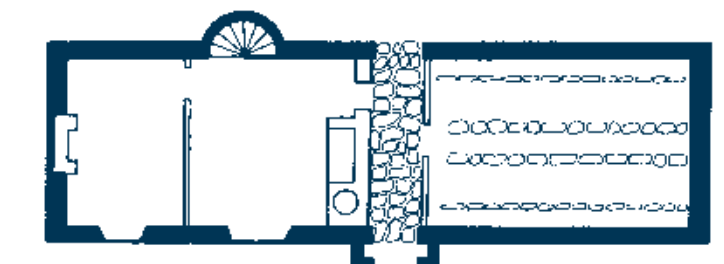
Detail of newelled staircase



1 The Dartmoor longhouse is a building of single-room depth crossed by a central passage, on the upper side of which was the living area, and on the lower a shippon for cattle. Animals and humans would share the same entrance. The roof was of thatch.

The medieval longhouse began as a single-storey building open to the roof with a central hearth in the living area. Smoke would drift into the thatch. The shippon had a central stone drain and cattle would be tethered to stakes fixed in drilled stone sunk in the floor.

2 While the shippon end remained virtually unaltered, probably the first domestic innovation was a sleeping platform which was reached by ladder.



3 Later improvements, perhaps in the 16th or 17th centuries, included the construction of a stone chimney stack and fireplace, together with the insertion of a complete first floor with bedrooms, and a staircase leading to it.

Many farms had stone porches added in the 17th century or later, and dairies were sometimes added as outshots.

For further information, and a list of other Dartmoor Posters and Fact Sheets available, contact the:
Education Service,
Dartmoor National Park Authority,
Parke, Bovey Tracey, Newton Abbot,
Devon TQ13 9JQ
Tel: (01626) 832093
E-mail: education@dartmoor-npa.gov.uk
Website: www.dartmoor-npa.gov.uk

Dartmoor National Park Authority on the World Wide Web: www.dartmoor-npa.gov.uk
© Dartmoor National Park Authority 2004
5/04/archivewh/longhouseeducationposter/mac

This publication may be photocopied for educational purposes under the Copyright Act 1988.